

ONES TO WATCH

Spotlighting the works of artists Matt Flint, Don Sahli and Doug Owen

WRITTEN BY Michele Corriel

Matt Flint translates the natural world through the use of layers, glyphs, scratched surfaces and repeated patterns. Powerfully emotional, Flint upends the transient humanistic experience into a rooted yet subtle tether to the land. By intuitively following the process Flint allows the viewer to absorb each facet of the piece while taking in cryptic details and partially concealed images.

Through his use of gouging and scraping Flint effectively isolates and engages. Each piece tells a story, although the narrative seems to come across as more of a dream, a remembered encounter rather than unraveled fiction.

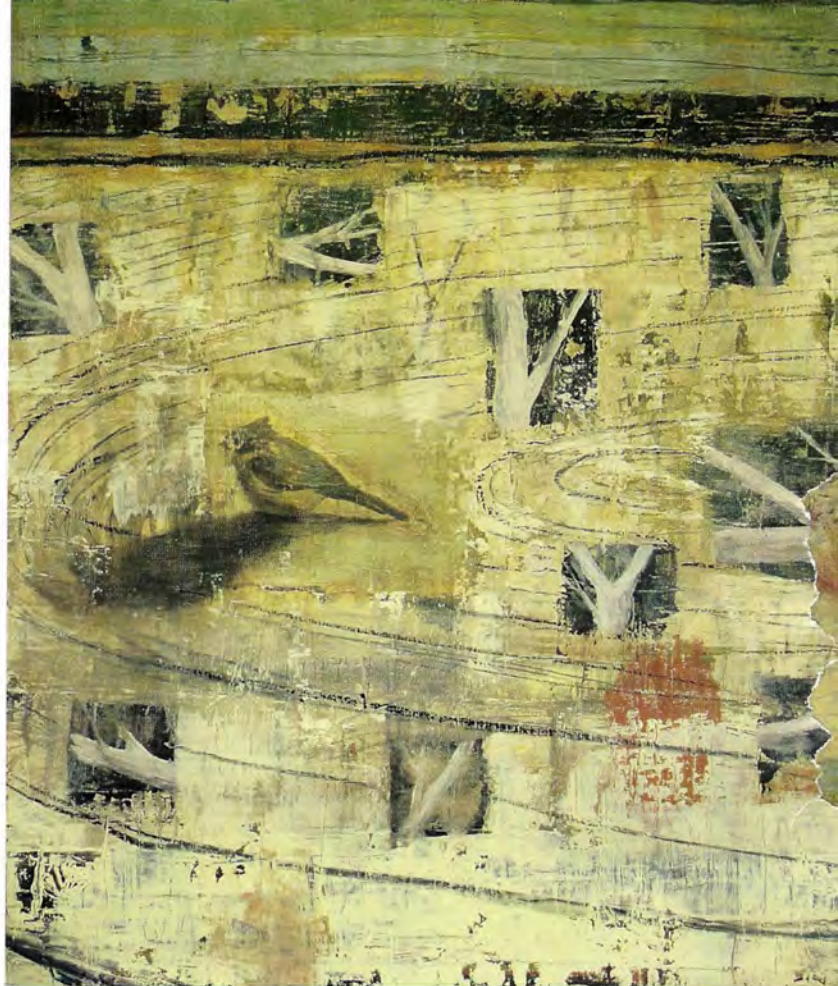
His work has appeared in several solo exhibits including a show at Central College, Pella, Iowa; the Stewart Gallery, Boise, Idaho; the Memorial Hall Main Gallery, Chadron State College, Chadron, Nebraska; and the Lyndsay McCandless Contemporary, Jackson Hole, Wyoming. In 2010 Flint's work is included in several group exhibits including the *Elements of Abstraction* at Gallery MAR, Park City, Utah; and the *Tokyo to Wyoming*, Western Wyoming College, Rock Springs, Wyoming.

Flint's work is collected both publicly and privately by the Audax Theatre Group, New York, New York; The Scott Opler Foundation, St. Petersburg, Florida; The Nicolaysen Museum of Art, Casper, Wyoming; The Wyoming State Museum, Cheyenne, Wyoming; and Spink Butler LLC, Boise, Idaho, among others.



VISIONS WEST GALLERIES
www.visionswestgallery.com

108 South Main St. Livingston, MT 406-222-0337
34 West Main St. Bozeman, MT 406-522-9946
1715 Wazee St. Denver, CO 303-292-0909



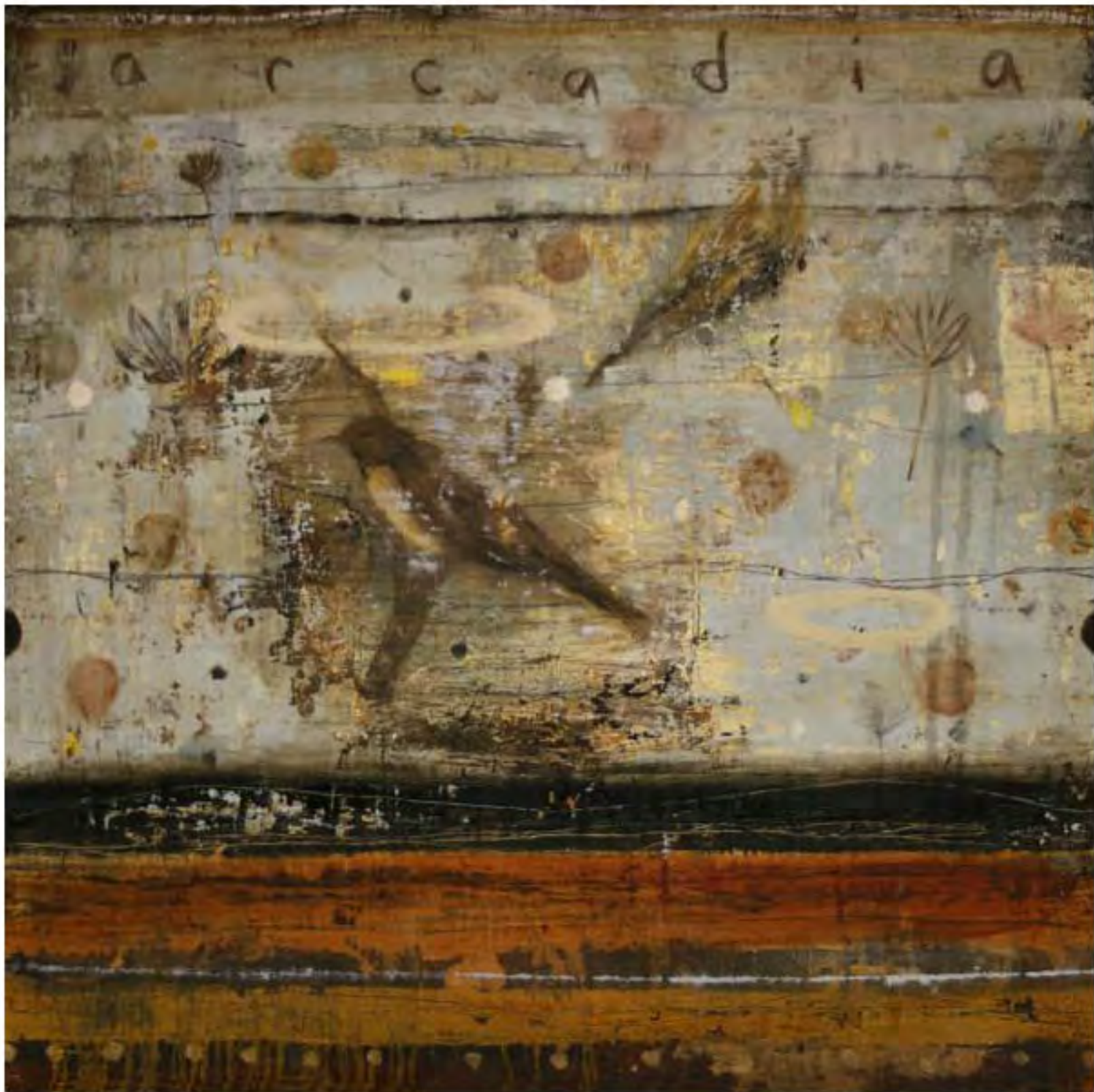
Places I've Never Been

Oil, Alkyd & Pencil on Canvas | 35 x 29 inches | 2009



Motion in Stillness

Mixed Media | 36 x 36 inches



Arcadia

Oil, Alkyd, and Pencil on Canvas | 24 x 24 inches